

Curate fund update: Going beyond the numbers

Ali Simpkins, CFA
Head: Proposition

Local offering

curate
THE ART OF INVESTING



Curate Momentum
Enhanced Yield Fund

Curate Momentum
Flexible Income Fund

Curate Momentum
Income Plus Fund



Curate Momentum
Balanced Fund



Curate Momentum
Flexible Property Fund



Curate Momentum
Equity Fund



(Part of Momentum Asset Management)

Global offering

curate
THE ART OF INVESTING



Curate **Global Sustainable
Equity** Fund*

Curate **Emerging
Markets Equity** Fund*

*Available through SA
feeder funds

Curate **Global Value**
Equity Fund

Curate **Global Growth**
Equity Fund

Curate **Global Quality**
Equity Fund



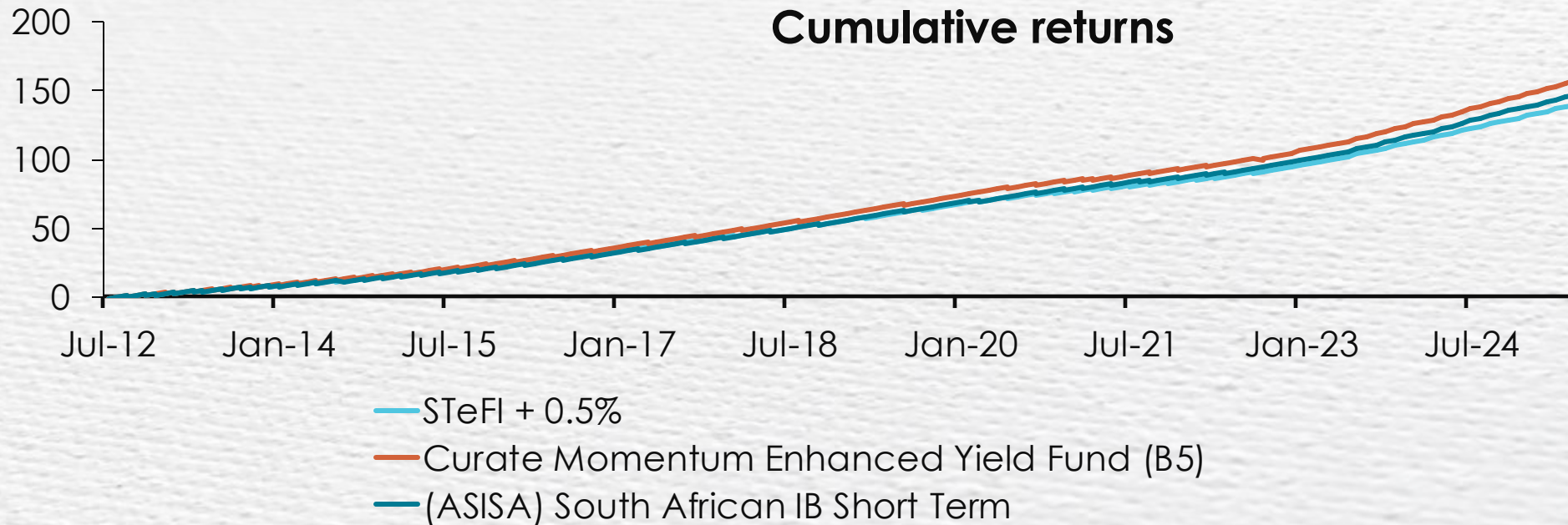
**Income-generation
and liquidity**



curate
THE ART OF INVESTING

Curate Momentum Enhanced Yield Fund

curate
THE ART OF INVESTING



Net
outperformance
of STeFI + 0.5%

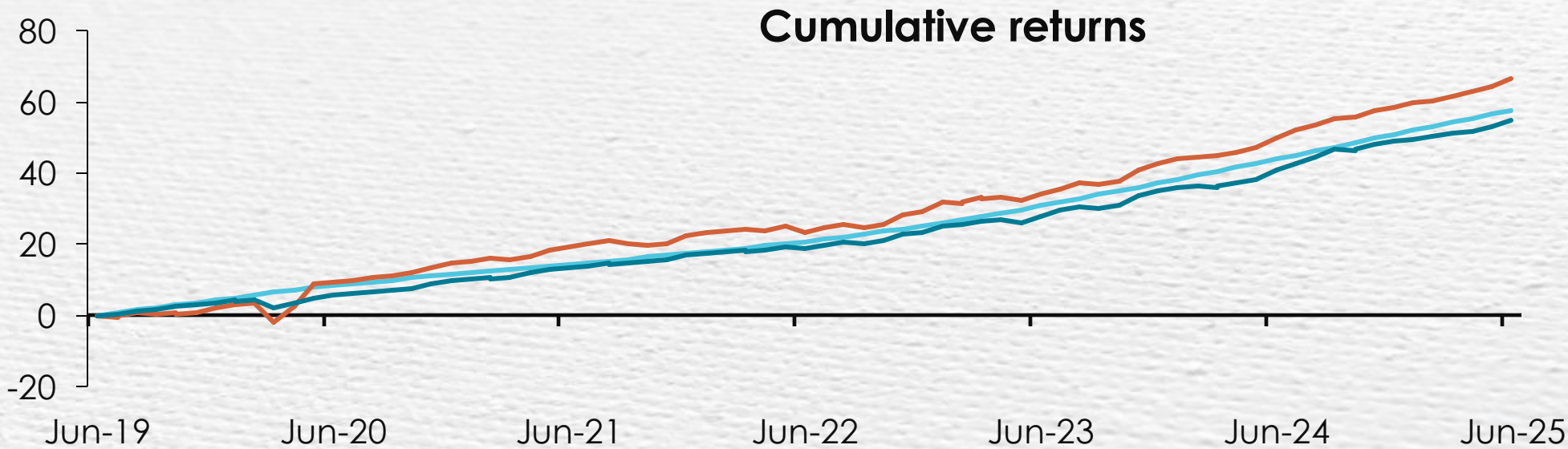
0.58%

Annualised returns	One year	Three years	Five years	10 years	Since inception*
Curate Momentum Enhanced Yield Fund (B5)	9.62%	9.07%	7.45%	7.90%	7.58%
STeFI + 0.5%	8.57%	8.29%	6.80%	7.25%	7.00%
(ASISA) South African IB Short term	9.46%	8.86%	7.39%	7.69%	7.26%

	Percentage	Date
Highest annualised return	10.11%	31-May-24
Lowest annualised return	4.48%	30-Sep-21

Curate Momentum Flexible Income Fund

curate
THE ART OF INVESTING



Net
outperformance
of STeFI + 1.5%

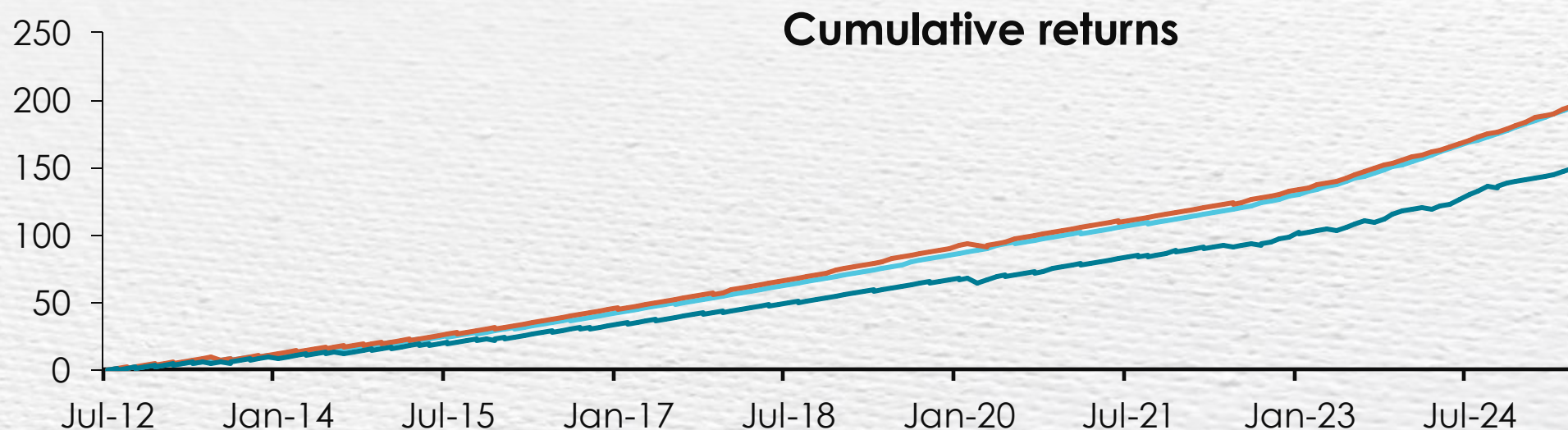
0.99%

— STeFI + 1.5% — Curate Momentum Flexible Income Fund (C) — (ASISA) South African MA Income

Annualised returns	One year	Three years	Five years	Since inception*	
Curate Momentum Flexible Income Fund (C)	11.16%	10.56%	8.83%	8.88%	
STeFI + 1.5%	9.57%	9.29%	7.80%	7.89%	
(ASISA) South African MA Income	10.14%	9.33%	7.99%	7.57%	
			Percentage	Date	
			Highest annualised return	17.65%	31-Mar-21
			Lowest annualised return	3.37%	30-Jun-22

Curate Momentum Income Plus Fund

curate
THE ART OF INVESTING



Net
outperformance
of STeFI + 2.5%

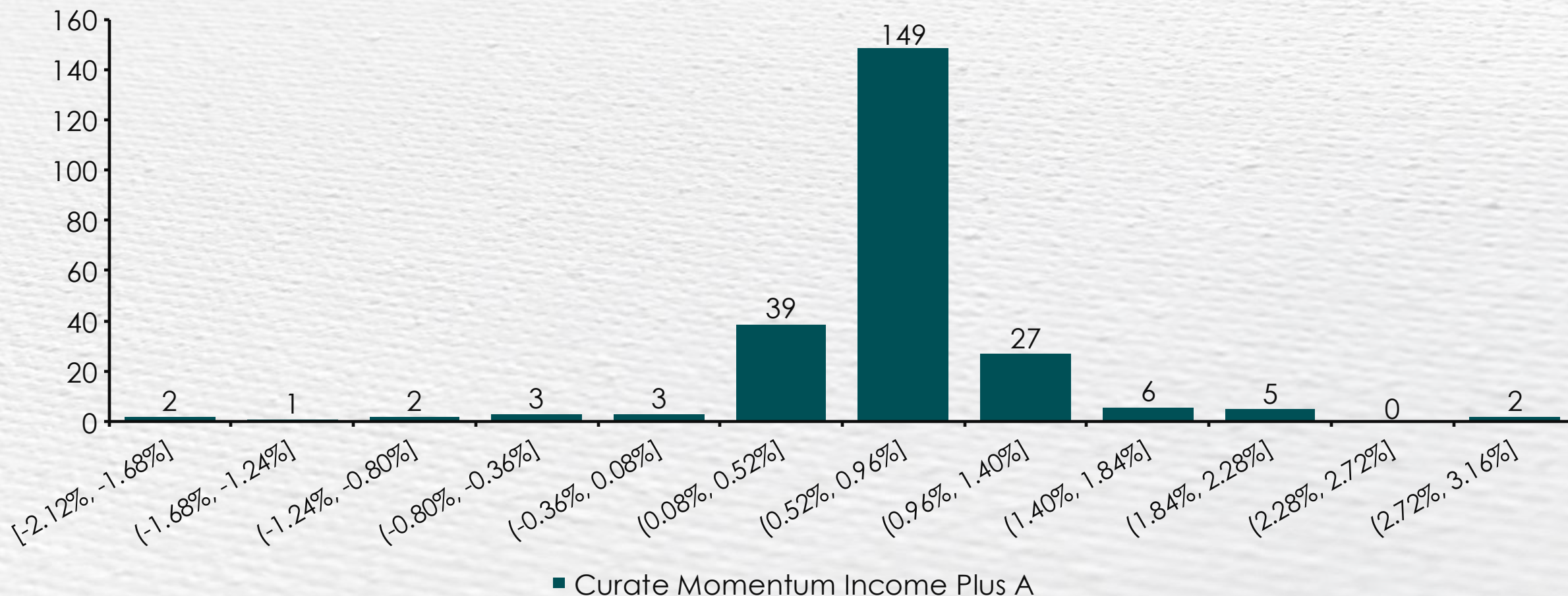
0.04%

Annualised returns	One year	Three years	Five years	10 years	Since inception*
Curate Momentum Income Plus Fund (C1)	10.31%	9.75%	8.67%	8.93%	8.75%
STeFI + 2.5%	10.61%	10.64%	9.21%	9.70%	8.71%
(ASISA) South African MA Income	10.14%	9.33%	7.99%	7.64%	7.34%
				Percentage	Date
Highest annualised return				10.77%	31-Jul-25
Lowest annualised return				6.00%	28-Feb-22

Curate Momentum Income Plus Fund

curate
THE ART OF INVESTING

Monthly returns over 20 years

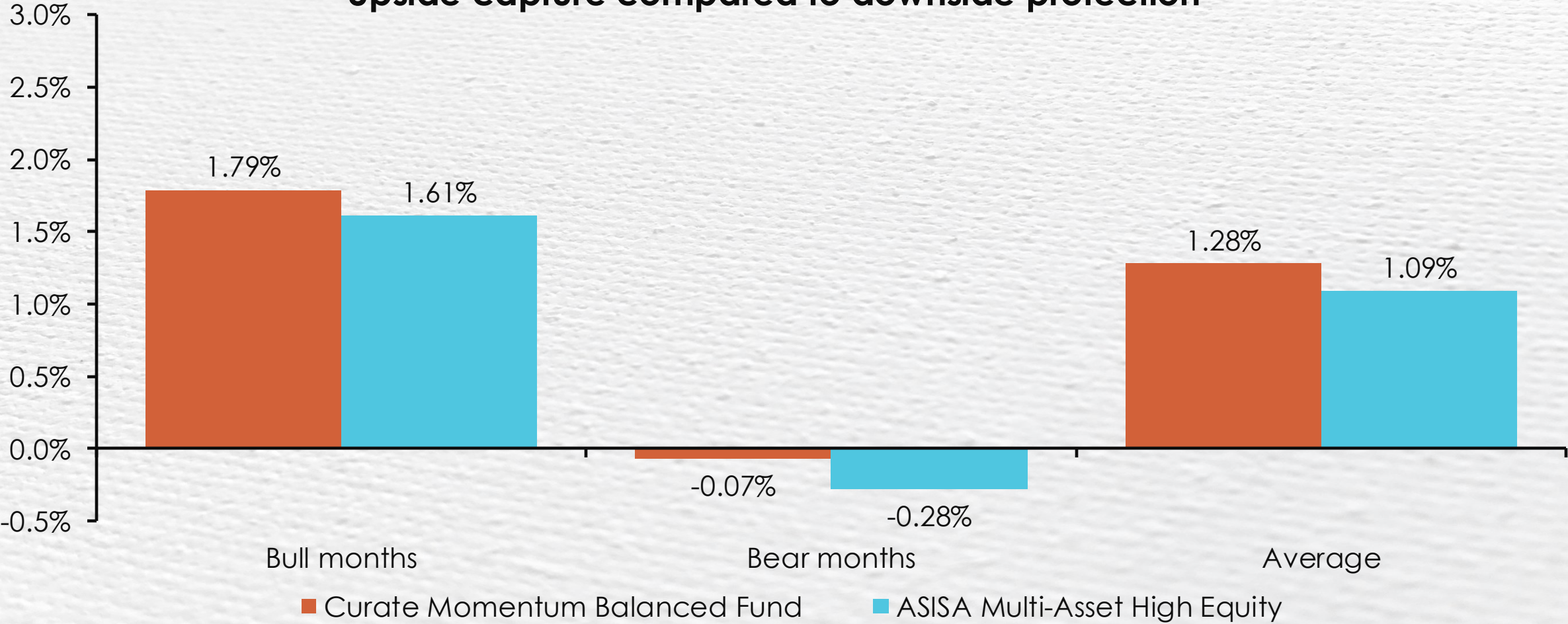


Capital growth



Curate Momentum Balanced Fund

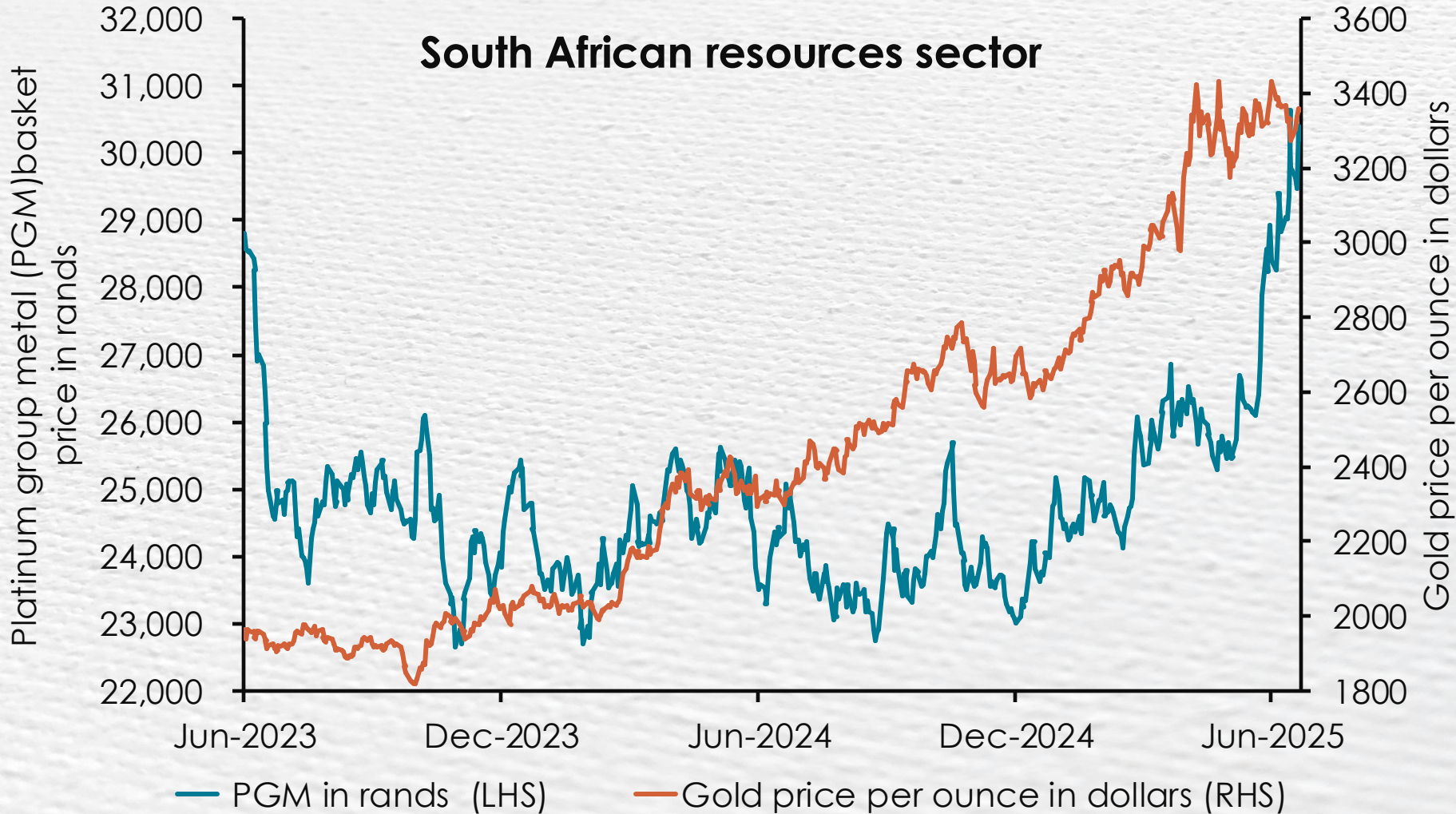
Upside capture compared to downside protection



Curate Momentum Equity Fund

curate
THE ART OF INVESTING

South African resources sector

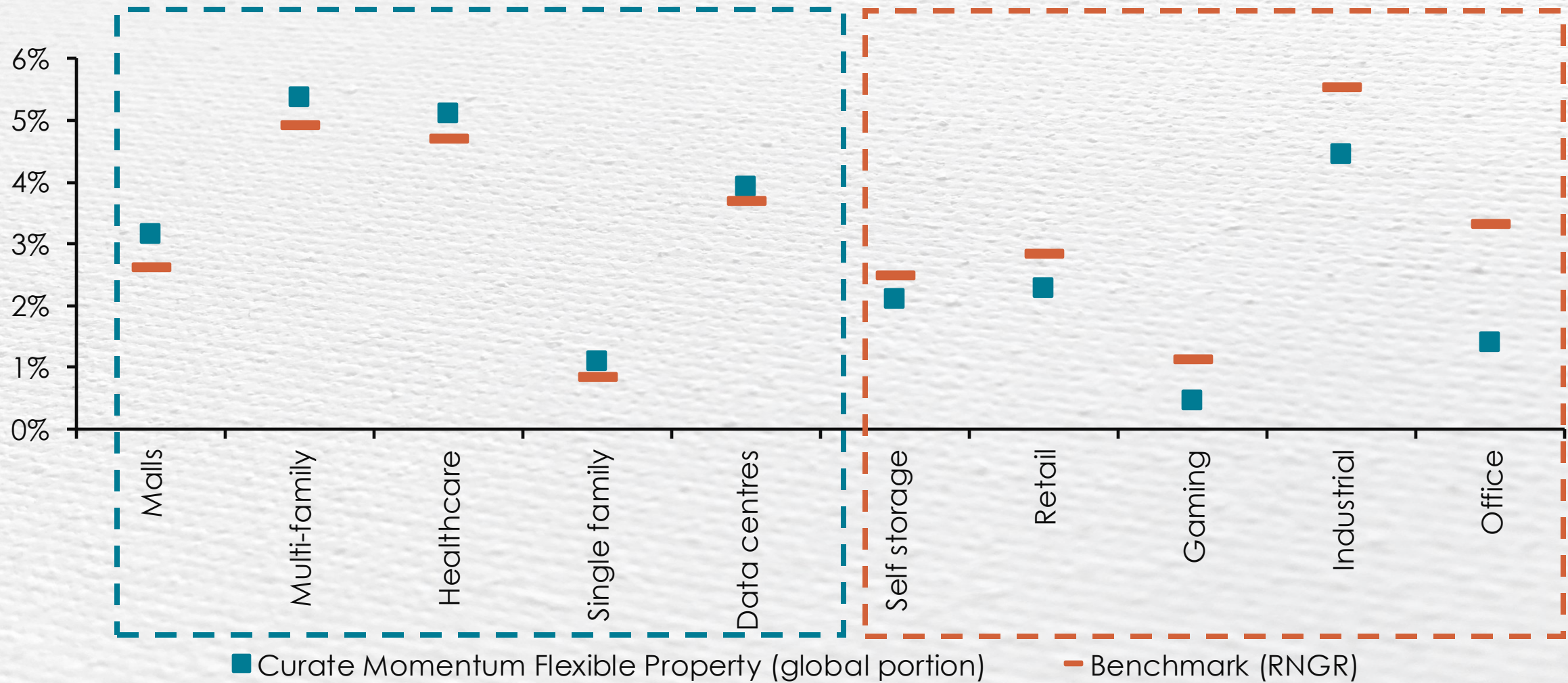



ANGLOGOLDASHANTI


IMPLATS
EXCELLENCE IN-PGMs

NORTHAM
PLATINUM HOLDINGS LIMITED

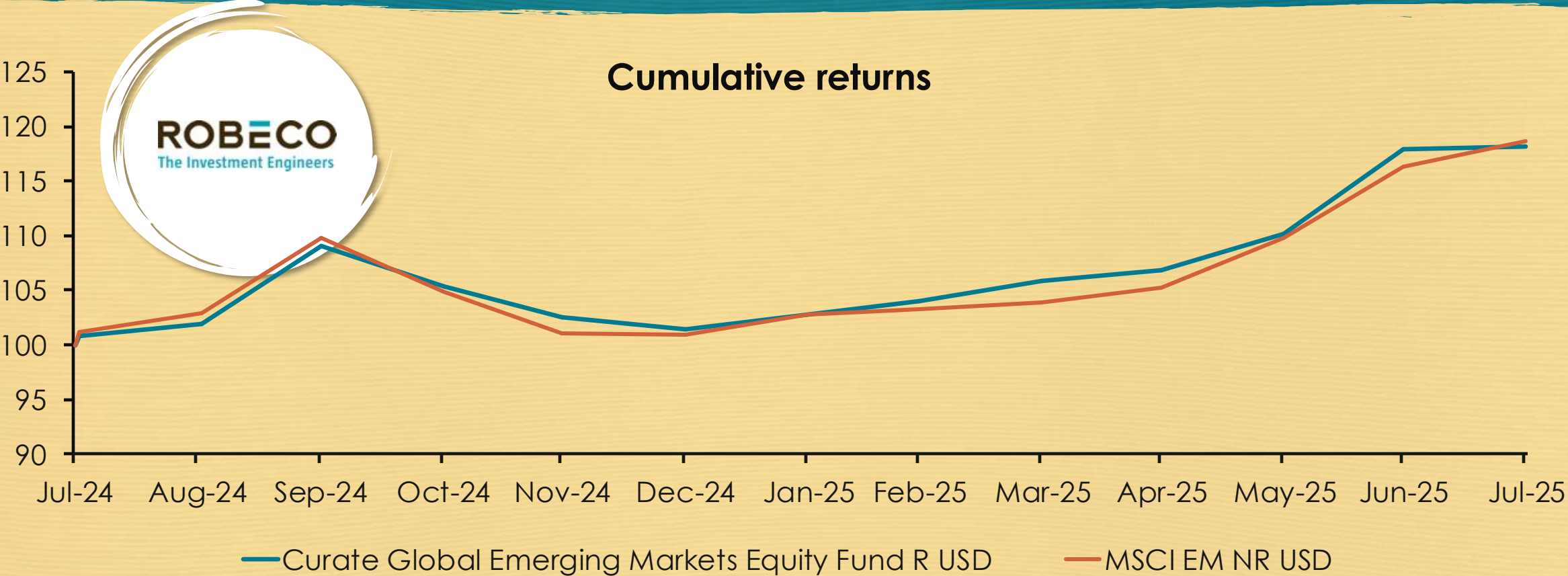
Curate Momentum Property Fund



Global funds

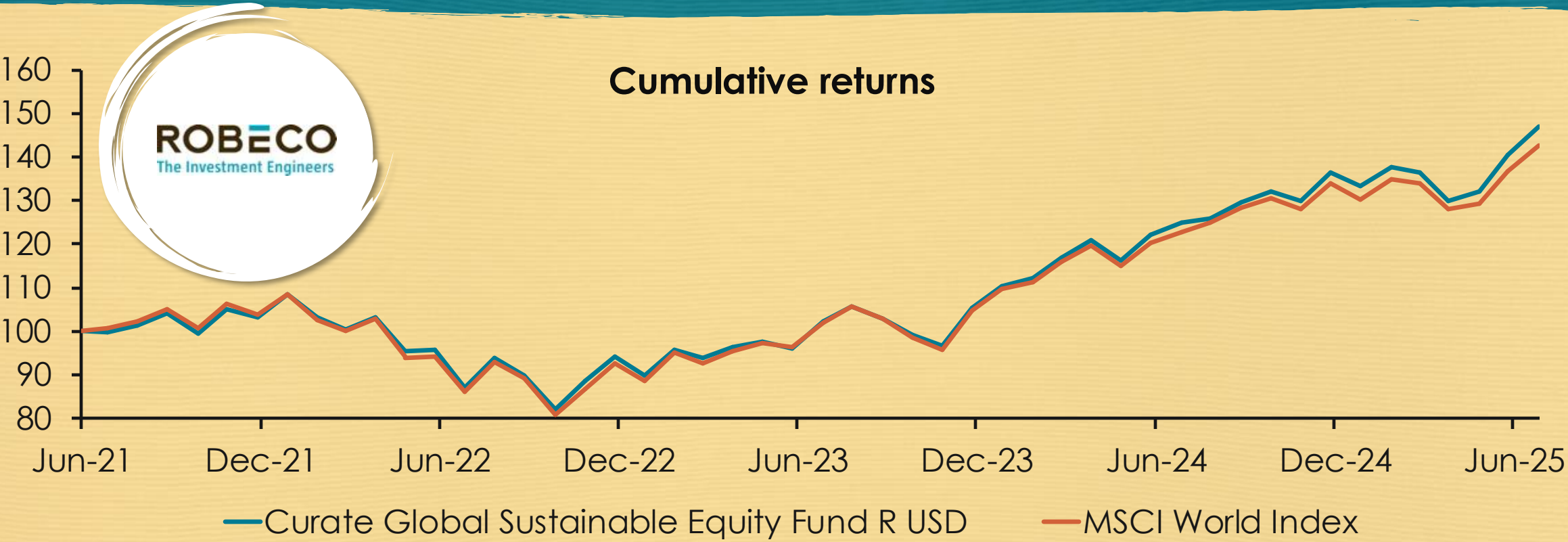


Curate Global Emerging Markets Equity Fund



One year	
Curate Global Sustainable Equity Fund R USD	17.24%
MSCI World Index	17.18%

Curate Global Sustainable Equity Fund



	One year	Two years	Three years	Five years
Curate Global Sustainable Equity Fund R USD	17.52%	19.83%	19.01%	10.15%
MSCI World Index	16.26%	18.21%	18.31%	9.13%

	Percentage	Date
Highest annualised return	34.47%	31-Oct-24
Lowest annualised return	-17.38%	30-Sep-22

Source: Morningstar using R-class in US dollar terms to 30 June 2025.
Highest and lowest returns of the fund/class of fund during the period detailed to 30 June 2025.

Curate Global Quality Equity Fund

curate
THE ART OF INVESTING



Curate Global Value Equity Fund

curate
THE ART OF INVESTING



Source: Company stats July 2024 , * Company AUM at July 2024 ** Company founded

Curate Global Growth Equity Fund

curate
THE ART OF INVESTING



Handpicked to achieve excellence

curate
THE ART OF INVESTING

Income

-  Curate Momentum **Enhanced Yield Fund**
-  Curate Momentum **Flexible Income Fund**
-  Curate Momentum **Income Plus Fund**

Capital Growth

-  Curate Momentum **Balanced Fund**
-  Curate Momentum **Equity Fund**
-  Curate Momentum **Flexible Property Fund**

Global

-  Curate Global **Sustainable Equity Fund***
-  Curate Global **Emerging Markets Equity Fund***
-  Curate Global **Value Equity Fund**
-  Curate Global **Growth Equity Fund**
-  Curate Global **Quality Equity Fund**

* Available through SA feeder funds

Curate fund specialist team

curate
THE ART OF INVESTING



Odirile Sebolao
Based in Pretoria



Natalie Harrison
Head of Distribution



Nkosana Nzima
Based in Johannesburg



Devon Worrall
Based in Cape Town



Bernice Paul
Based in Durban



Thank you

CIS disclosures

The Curate investment funds are co-named portfolios administered by Momentum Collective Investments (RF) (Pty) Ltd (the management company), registration number 1987/004287/07, which is authorised in terms of the Collective Investment Schemes Control Act, No 45 of 2002 (CISCA) to administer collective investment schemes (CISs) in securities, and retains full legal responsibility for the Curate investment funds. The management company is the manager of the Momentum Collective Investments Scheme (the scheme) and is part of Momentum Metropolitan Life Limited, an authorised financial services provider (FSP) (FSP 6406) under the Financial Advisory and Intermediary Services Act No. 37 of 2002 (FAIS), a registered credit provider (NCRCP 173), a full member of the Association for Savings and Investment SA (ASISA) and rated B-BBEE level 1. Standard Bank of South Africa Limited, registration number 1962/000738/06, is the trustee of the scheme. All investment fund returns are calculated for a class. Individual investor returns may differ as a result of fees, actual date(s) of investment, date(s) of reinvestment of income and withholding tax. All investment fund returns shown are after the deduction of the total investment charges (TIC) but exclude any initial or ongoing advisory fees that may, if applicable, be charged separately. Annualised returns, also known as compound annualised growth rates, are calculated from cumulative returns and provide an indication of the average annual return achieved from an investment that was held for the stated period. Actual annual figures are available from Curate or the management company on request. All investment fund returns figures quoted (tables and charts where presented) are at the date of the relevant document, based on a lump sum investment, using net asset value (NAV) to NAV prices with income distributions reinvested on the ex-dividend date. Inflation figures, where presented, are lagged by one month. Cash figures, where presented, are Short-term Fixed Interest Composite Index returns (Stefi). All figures quoted in are in rand terms. CISs are generally medium- to long-term investments. The value of participatory interests (units) may go down as well as up and past returns are not necessarily a guide to future performance. CISs are traded at ruling prices and can engage in borrowing and securities lending. The CIS may borrow up to 10% of the market value of the investment fund to bridge insufficient liquidity. Different classes of units apply to investment funds, which are subject to different fees and charges. A schedule of fees and charges and maximum commissions is available on request from Curate or the management company. The management company reserves the right to close and reopen certain investment funds to new investors from time to time to manage them more efficiently in accordance with their mandate. The following transaction cut-off times apply: for all investment funds, except for feeder funds is 14:00 on the pricing date; for feeder funds is 14:00 on the business day before the pricing date. The following investment fund valuation times apply: All investment funds, except for feeder funds are 15:00 and 17:00 on the last business day of every month; feeder funds are 24:00. Latest prices can be viewed at curateinvestments.com/sa and in some national newspapers. Forward pricing is used. The management company does not provide any guarantee, either with respect to the capital or the return of this investment fund. Additional information on the proposed investment including, but not limited to, brochures, application forms, the annual report and any half-yearly report can be obtained, free of charge, at curateinvestments.com/sa or on request from Curate or the management company. Foreign held securities by the investment funds may have additional material risks, depending on the specific risks affecting that country, such as potential constraints on liquidity and the repatriation of money, macroeconomic risks, political risks, foreign exchange risks, tax risks, settlement risks as well as potential limitations on the availability of market information. Fluctuations or movements in exchange rates may cause the value of underlying international investments to go up or down. Investors are reminded that an investment in a currency other than their own may expose them to a foreign exchange risk. The terms and conditions, a schedule of fees, charges and maximum commissions, performance fee frequently asked questions as well as the minimum disclosure document (MDD) and quarterly investor report (QIR) for each portfolio are available at curateinvestments.com/sa. Associates of the management company may be invested within certain investment funds and the details thereof are available from Curate or the management company.

Feeder funds

A feeder fund is a portfolio that invests in a single portfolio of a collective investment scheme, which levies its own charges and which could result in a higher fee structure for the feeder fund.

Bond/income funds

Bond and income yields quoted in the press are historical yields based on distributions and income accruals calculated monthly. This document should not be seen as an offer to purchase any specific investment fund and is not to be construed as advice. Investors are encouraged to obtain independent professional investment and taxation advice before investing with or in any of Curate's investment funds. Curate's complaints policy and procedure as well as the conflicts of interest management policy are available at curateinvestments.com/sa. The management company's complaints policy and procedure as well as the conflicts of interest management policy are available at momentum/investments.co.za.

Sources: Morningstar, Momentum Asset Management, IRESS

Global disclosures

This is a marketing communication. Collective investments are generally medium to long-term investments. The value of units may go down as well as up and past performance is not necessarily a guide to the future. Collective investments are traded at ruling prices. Commission and incentives may be paid and, if so, would be included in the overall costs. All performance is calculated on a total return basis, after deduction of all fees and commissions and in US dollar terms. The Fund invests in other collective investments, which levy their own charges. Higher risk investments include, but are not limited to, investments in smaller companies, even in developed markets, investments in emerging markets or single country debt or equity funds and investments in high yield or non-investment grade debt. Foreign securities may have additional material risks, depending on the specific risks affecting that country, such as: potential constraints on liquidity and the repatriation of funds; macroeconomic risks; political risks; foreign exchange risks; tax risks; settlement risks; and potential limitations on the availability of market information. Investment in the Fund may not be suitable for all investors. Investors should obtain advice from their financial adviser before proceeding with an investment. This document should be read in conjunction with the prospectus of Momentum Global Funds, in which all the current fees additional disclosures, risk of investment and fund facts are disclosed. This document should not be construed as an investment advertisement, or investment advice or guidance or proposal or recommendation in any form whatsoever, whether relating to the Fund or its underlying investments. It is for information purposes only and has been prepared and is made available for the benefit of the investors. While all care has been taken by the Investment Manager in the preparation of the information contained in this document, neither the Manager nor Investment Manager make any representations or give any warranties as to the correctness, accuracy or completeness of the information, nor does either the Manager or Investment Manager assume liability or responsibility for any losses arising from errors or omissions in the information.

This Fund is a sub-fund of the Momentum Global Funds SICAV, which is domiciled in Luxembourg and regulated by the Commission de Surveillance du Secteur Financier. The Fund conforms to the requirements of the European UCITS Directive. FundRock Management Company S.A., incorporated in Luxembourg, is the Management Company with its registered office at 33, Rue de Gasperich, L-5826 Hesperange, Luxembourg. Telephone [+352 271 111](tel:+352271111). JP Morgan Bank Luxembourg SA, incorporated in Luxembourg, is the Administrator and Depositary with its registered office at European Bank & Business Centre, 6, route de Trèves, L-2633 Senningerberg, Luxembourg. Telephone [+352 462 6851](tel:+3524626851).

This document is issued by Momentum Global Investment Management Limited (MGIM). MGIM is the Investment Manager, Promoter and Distributor for the Momentum Global Funds SICAV. MGIM is registered in England and Wales No. 03733094. Registered Office: The Rex Building, 62 Queen Street, London EC4R 1EB. Telephone [+44 \(0\)20 7489 7223](tel:+442074897223) Email DistributionServices@momentum.co.uk. MGIM is authorised and regulated by the Financial Conduct Authority No. 232357, and is exempt from the requirements of section 7(1) of the Financial Advisory and Intermediary Services Act 37 of 2002 (FAIS) in South Africa, in terms of the FSCA FAIS Notice 141 of 2021 (published 15 December 2021). Either MGIM or FundRock Management Company SA, the management company, may terminate arrangements for marketing under the denotification process in the new Cross-border Distribution Directive (Directive EU) 2019/1160.